

INTRODUCING Advanced Electrical Design for Autodesk Revit

A Revit extension for electrical engineers and designers, created in partnership with Autodesk.

BUY NOW



Add the power of advanced electrical design to Revit

Reduce rework and optimize data collaboration across projects and teams, with a fully integrated workflow. Plan, analyze and optimize your electrical plans all in a single place with easy-to-use tools designed for electrical engineers, and keep your diagrams in-sync with the architectural model throughout the building process.

WATCH VIDEO

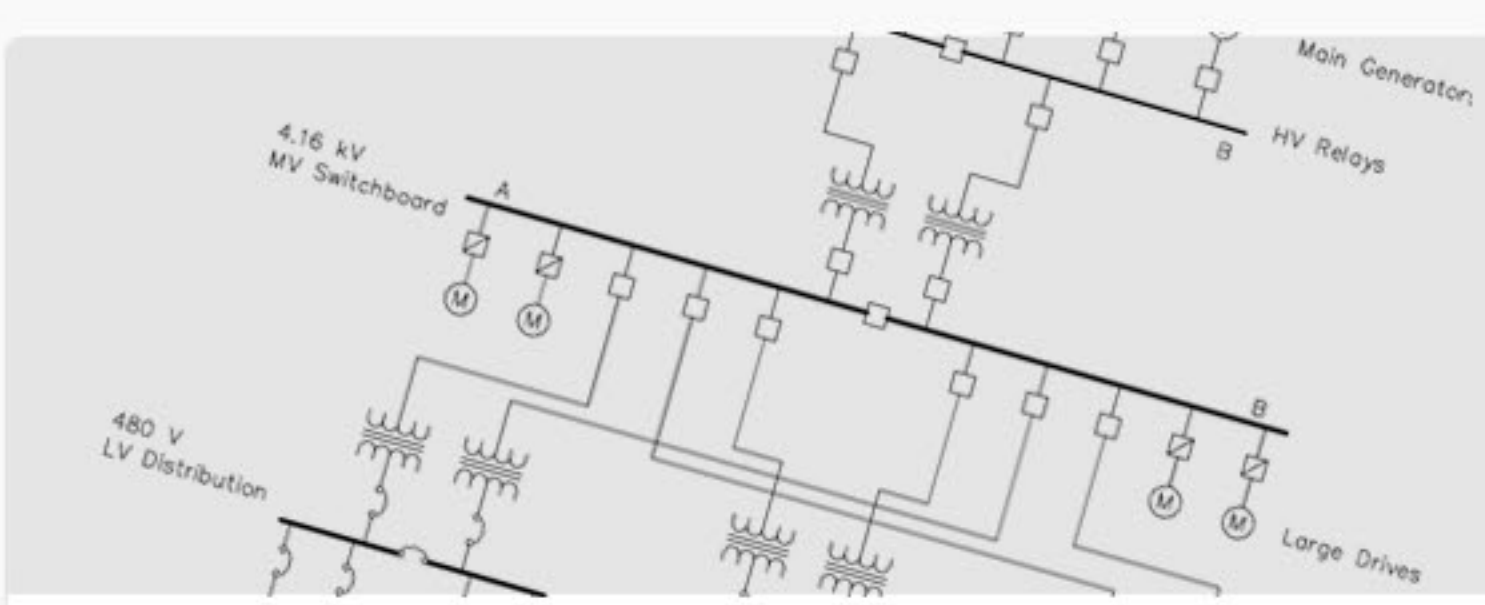
All of your electrical planning. All in one place.

Start your planning and load analysis before a physical model is provided, then use that same data during project design and analysis, saving you time, reducing errors and lessening redundancies.



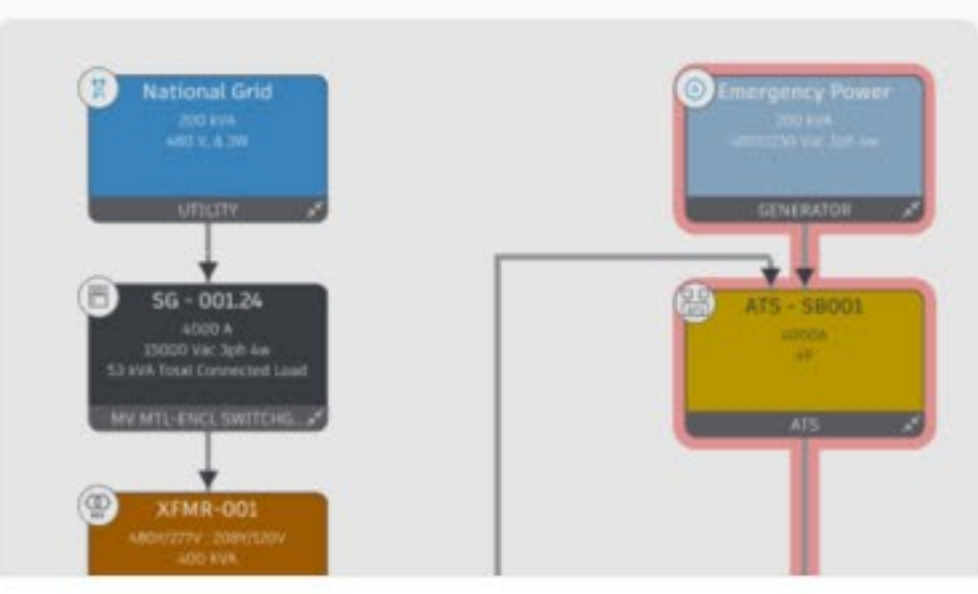
KEY LINE WORKSPACE A new kind of electrical diagram

Part electrical diagram, part flow chart, the newly introduced Key Line workspace is a more conceptual way to think about electrical design. Combining a drag-and-drop diagram with high-level calculations, it's perfect for seeing the bigger picture during initial project planning.



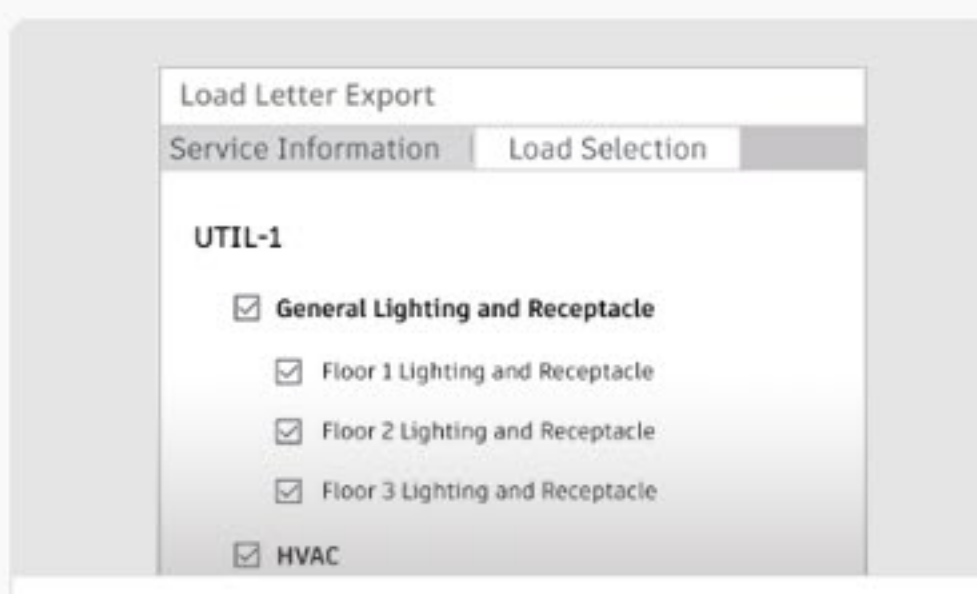
RISER & SINGLE LINE WORKSPACES Connected diagram workspaces

Create pro-level Riser and Single line diagrams, manually or auto-generated from another diagram type. Whichever diagram workspace you work in, all data is automatically transferred across the others, giving you three types of diagrams and one perfectly synced electrical plan.



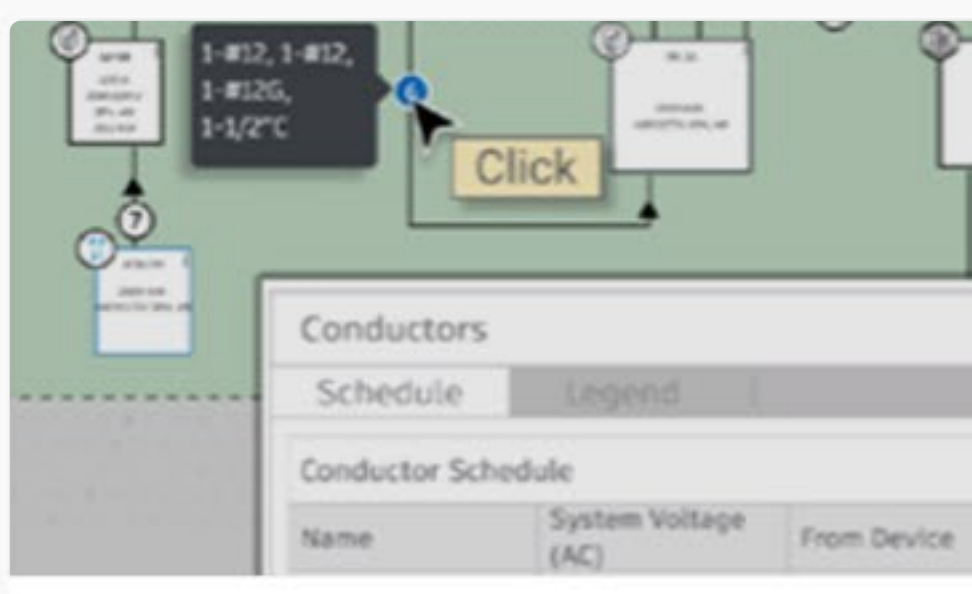
POWER SCENARIOS Analyze loads; optimize design

Analyze the total demand loads of each subsection of an electrical system to optimize energy design and ensure proper equipment sizing. Power scenarios can be created in Key Line and Riser workspaces, and viewed in any workspace including Single Line.



LOAD LETTER Easily generate reports

With Advanced Electrical Design, reports like load letters, or cable schedules, can be easily generated. Using automated real-time calculations, the load letter provides a breakdown of load characteristics and utility needs for an entire structure, formatted for delivery to utility companies as required.



INTEGRATED CODE REGULATIONS Save time and reduce errors

Ensure accuracy while reducing the amount of time devoted to compliance with regional code-based calculations and recommendations built right into the Advanced Electrical Design extension.

See what a difference an extension can make

Now you can plan, configure and calculate your electrical plans right from Revit.

Annual subscription

\$XXXX / 1 year

BUY NOW

3 year subscription

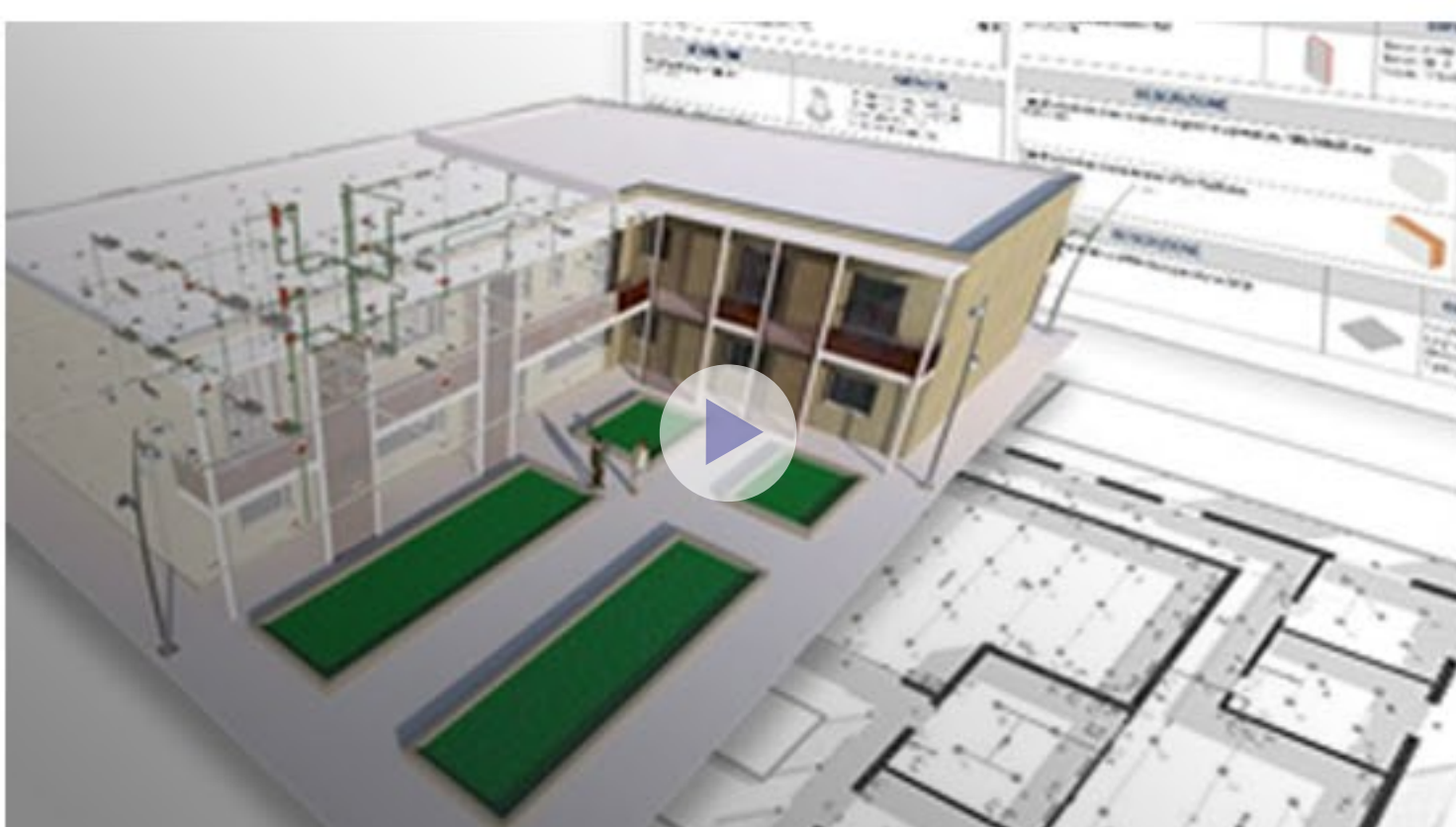
\$XXXX / 3 year (X0% savings)

BUY NOW

White paper lorem ipsum dolor

Lorem ipsum dolor sit amet, consectetur adipisicing elit, sed do eiusmod tempor incididunt ut labore et dolore magna aliqua. Ut enim ad minim veniam, quis nostrud exercitation ullamco laboris nisi ut aliquip ex ea commodo.

DOWNLOAD



Training video headline here

Lorem ipsum dolor sit amet, consectetur adipisicing elit, sed do eiusmod tempor incididunt ut labore et dolore magna aliqua. Ut enim ad minim veniam, quis nostrud exercitation ullamco laboris nisi ut aliquip ex ea commodo consequat. Duis aute irure dolor in reprehenderit in voluptate velit esse.

WATCH VIDEO

Get the Advanced Electrical Design for Revit newsletter for more great resources

Email

SUBSCRIBE

Frequently asked questions (FAQs)

- + What is Advanced Electrical Design for Autodesk Revit used for?
- + Who uses Advanced Electrical Design for Autodesk Revit?
- + Can I use Advanced Electrical Design for Autodesk Revit to create riser diagrams?

See more FAQs

Need more information?

Lorem ipsum dolor sit amet, consectetur adipisicing elit, sed do eiusmod tempor incididunt ut labore et dolore magna aliqua. Ut enim ad minim veniam, quis nostrud exercitation ullamco laboris nisi ut aliquip ex ea commodo.

Choose a category

First name* Last name*

Company Title

Email* Phone

Your message

I'm not a robot

Send me the Advanced Electrical Design for Autodesk Revit newsletter.

SEND

About BIMelectric

Lorem ipsum dolor sit amet, consectetur adipisicing elit, sed do eiusmod tempor incididunt ut labore et dolore magna aliqua. Ut enim ad minim veniam, quis nostrud exercitation ullamco laboris nisi ut aliquip ex ea commodo. Lorem ipsum dolor sit amet, consectetur adipisicing elit, sed do eiusmod tempor incididunt ut labore et dolore magna aliqua. Ut enim ad minim veniam, quis nostrud exercitation ullamco laboris nisi ut aliquip ex ea commodo.

INTRODUCING

Advanced Electrical Design for Autodesk Revit

A Revit extension for electrical engineers and designers, created in partnership with Autodesk.

BUY NOW



Add the power of advanced electrical design to Revit

Reduce rework and optimize data collaboration across projects and teams, with a fully integrated workflow. Plan, analyze and optimize your electrical plans all in a single place with easy-to-use tools designed for electrical engineers, and keep your diagrams in-sync with the architectural model throughout the building process.

WATCH VIDEO

All of your electrical planning. All in one place.

Start your planning and load analysis before a physical model is provided, then use that same data during project design and analysis, saving you time, reducing errors and lessening redundancies.

KEY LINE WORKSPACE

RISER & SINGLE LINE WORKSPACES

POWER SCENARIOS

LOAD LETTER

INTEGRATED CODE CALCULATIONS

KEY LINE WORKSPACE

A new kind of electrical diagram

Part electrical diagram, part flow chart, the newly introduced Key Line workspace is a more conceptual way to think about electrical design. Lay out power sources, equipment and loads of a project's electrical system using a drag-and-drop diagram with high-level calculations. It's perfect for seeing the bigger picture during initial project planning.



See what a difference an extension can make

Now you can plan, configure and calculate your electrical plans right from Revit.

Annual subscription

\$XXXX / 1 year

BUY NOW

3 year subscription

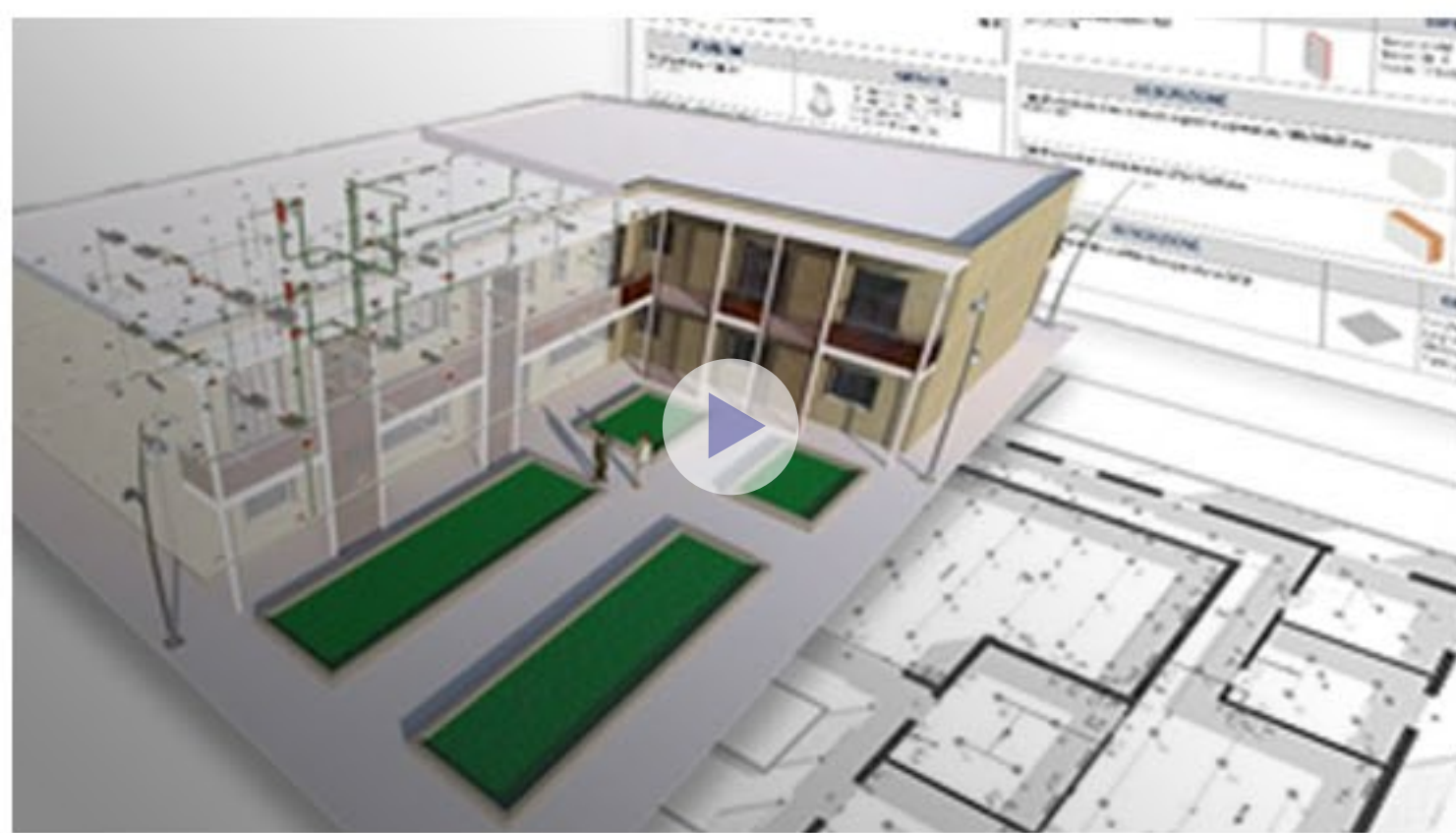
\$XXXX / 3 year (X0% savings)

BUY NOW

White paper lorum ispum dolor

Lorem ipsum dolor sit amet, consectetur adipisicing elit, sed do eiusmod tempor incididunt ut labore et dolore magna aliqua. Ut enim ad minim veniam, quis nostrud exercitation ullamco laboris nisi ut aliquip ex ea commodo.

DOWNLOAD



Training video headline here

Lorem ipsum dolor sit amet, consectetur adipisicing elit, sed do eiusmod tempor incididunt ut labore et dolore magna aliqua. Ut enim ad minim veniam, quis nostrud exercitation ullamco laboris nisi ut aliquip ex ea commodo consequat. Duis aute irure dolor in reprehenderit in voluptate velit esse.

WATCH VIDEO

Get the Advanced Electrical Design for Revit newsletter for more great resources

Email

SUBSCRIBE

Frequently asked questions (FAQs)

- + What is Advanced Electrical Design for Autodesk Revit used for?
- + Who uses Advanced Electrical Design for Autodesk Revit?
- + Can I use Advanced Electrical Design for Autodesk Revit to create riser diagrams?

See more FAQs

Need more information?

Lorem ipsum dolor sit amet, consectetur adipisicing elit, sed do eiusmod tempor incididunt ut labore et dolore magna aliqua. Ut enim ad minim veniam, quis nostrud exercitation ullamco laboris nisi ut aliquip ex ea commodo.

Choose a category

First name*

Last name*

Company

Title

Email*

Phone

Your message

I'm not a robot



Send me the Advanced Electrical Design for Autodesk Revit newsletter.

SEND

About BIMelectric

Lorem ipsum dolor sit amet, consectetur adipisicing elit, sed do eiusmod tempor incididunt ut labore et dolore magna aliqua. Ut enim ad minim veniam, quis nostrud exercitation ullamco laboris nisi ut aliquip ex ea commodo. Lorem ipsum dolor sit amet, consectetur adipisicing elit, sed do eiusmod tempor incididunt ut labore et dolore magna aliqua. Ut enim ad minim veniam, quis nostrud exercitation ullamco laboris nisi ut aliquip ex ea commodo.